

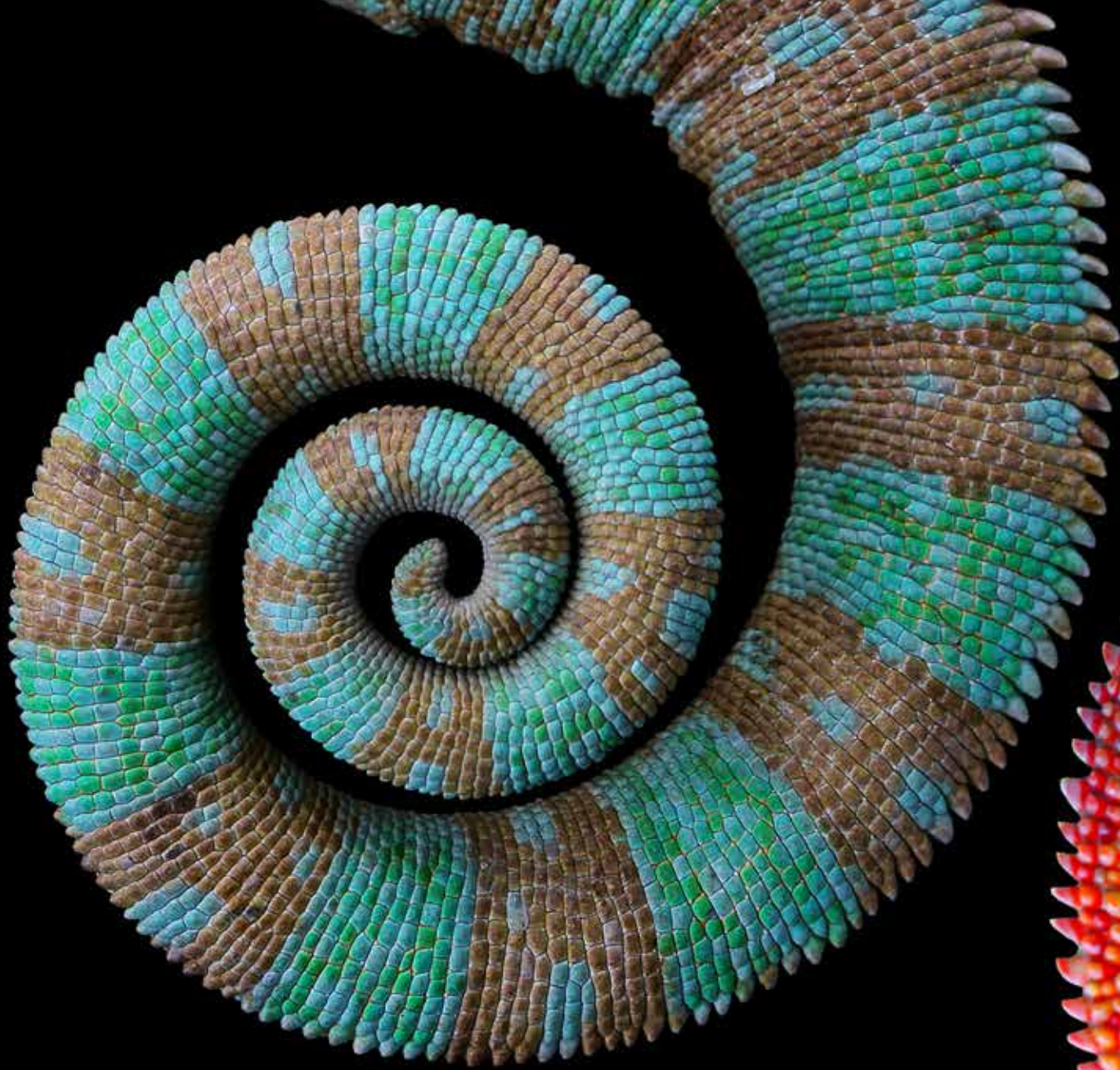
Dare to be extraordinary

With Rockpanel Chameleon



Rockpanel[®]

Part of the ROCKWOOL Group





Why fit in when you were born to stand out?

Chameleons don't sing like birds or call like frogs, or engage in any type of verbal communication. Yet, they do have a powerful tool at hand: they can interact with their ability to change colour.

Contrary to popular belief, chameleons usually don't change colour to camouflage themselves. Instead, their colour change is primarily used for intraspecific communication and to maintain a favourable body temperature. They also use their colourful anatomy as a "billboard" to communicate with their surrounding environment.

Chameleons don't blend in with their surroundings. They stand out and show their inner world to the public by means of their own colourful language.

When designing buildings, you also have the power to communicate with colourful statements. With Rockpanel Chameleon, you can let a building interact with the world.

Dare to stand out. Dare to be extraordinary.



**Fascinatingly
different**



Add a little magic

Making heads turn. The uniqueness of Rockpanel Chameleon.

A chameleon-effect facade never looks the same but is always striking and inspiring. Depending on the angle from which a building is viewed and the sun's reflection on it, the surface of the Rockpanel Chameleon facade is always enchanting.

From schools, corporate buildings, and housing to leisure complexes, these magical facades will always stand out.

A sustainable choice

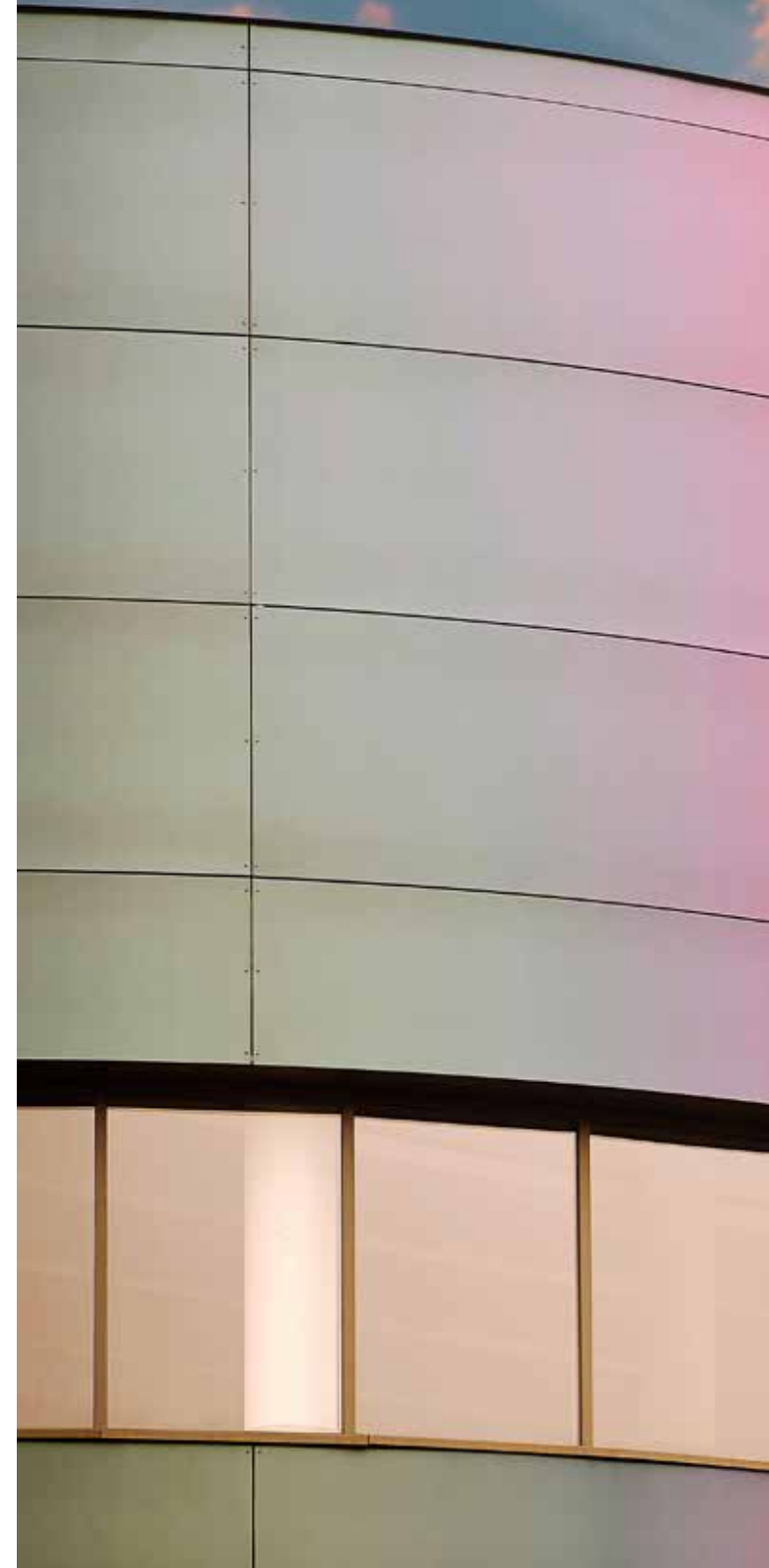
Rockpanel cladding is made from stone wool comprising of the non-depletable natural rock basalt, which is highly fire resilient by nature. In addition, we use recycled content from other industries that would otherwise end up in landfill. Since they can be recycled into new stone wool products with the same high quality, Rockpanel cladding is a highly sustainable building material.

Easy to work with

The products combine the advantages of stone with the workability of wood. They are lightweight and easy to cut with standard tools. Mounting is fast and simple, with a range of visible, semi-visible and even invisible fixing options.

Long-lasting beauty

Rockpanel is ready to withstand the elements. The panels are colourfast, UV-resistant, highly durable and require little maintenance. Being stone, they are insensitive to moisture and make it possible for very narrow joints between panels under certain conditions.





**For lasting
impressions**



Green

Brown



Light Purple

Light Brown



Purple

Green

Blue



Red

Gold

Purple

Four designs, three gloss grades

Similar to real chameleons, Rockpanel Chameleon facade panels also get their ability to change colour thanks to a special crystal effect layer in their coating. It's the colour underneath this layer that determines which colour range the four different Chameleon variants have.

Also, all Rockpanel Chameleon boards have a transparent ProtectPlus coating, allowing for self-cleaning and easy graffiti removal.

The Rockpanel Chameleon range consists of four colour variations. Looking for more design options? We offer three gloss grades: matt, semi-gloss and high-gloss. Each design can give a building its own unique look.

Whether you're looking for a complete facade with Rockpanel Chameleon, or for visually interesting detailing: you'll always make heads turn.

Which look are you going for?

Matt

Semi-gloss

High-gloss



MENABREA



A classy renovation

Birra Menabrea is the oldest beer brewery in Italy. Their production facility, located in the historic centre of Biella, was in need of renovation and modernization. However, preserving its historical elements was also vital.



Project: Menabrea Brewery, Biella, Italy

The exterior of the brewery needed to have significant symbolic value: in addition to the historical logo of the company, it was necessary to find an element that clearly reflected the product being created inside, referring to the colour and transparency of beer.

This was found in Rockpanel Chameleon Light Purple-Light Brown facade panels.



A daring makeover

A catapult launch into the future. That is an accurate way to describe the renovation of a four-storey office building in Nienburg, Germany.

By redesigning the facade with many floor-to-ceiling windows and Rockpanel Chameleon cladding, the building became a head-turner on one of the main access roads to the city.

The unusual facade panels were discovered by the building owner himself. Hans-Erich Fischer, being a civil engineer, enjoys regularly looking around for new and unusual solutions. When he came across the iridescent, multicoloured panels on one of his digital journeys, he saw the perfect fit for his goal of making the building a “real eye-catcher”.



Project: Renovation of office building, Nienburg, Germany

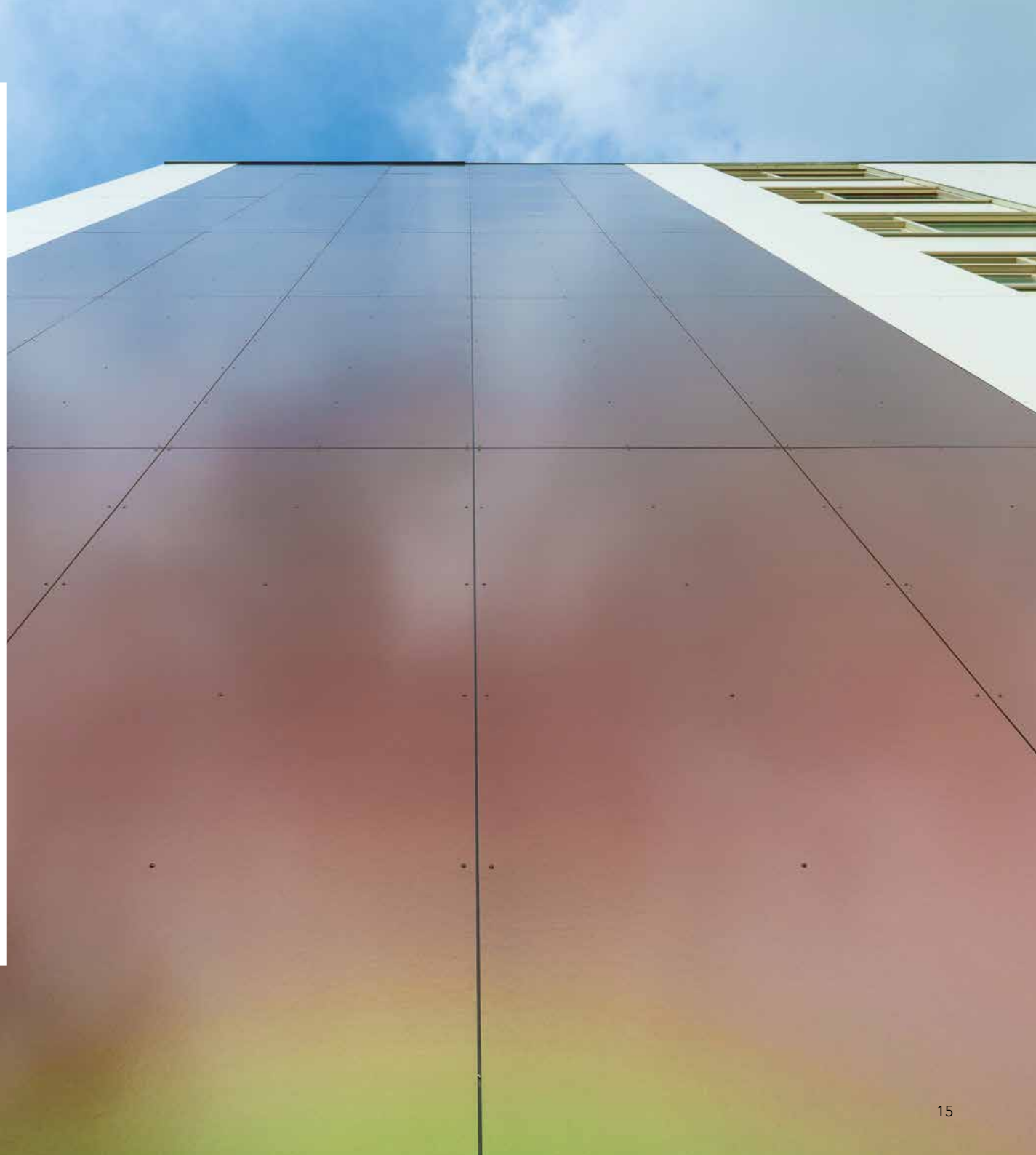
Colourful facades breathe new life into flats

The renovation of four gallery flats in Haarlem (the Netherlands) proves that it is possible to regenerate old flats into a modern facade vision.

Architect Marc De Wilde: "When we came across Rockpanel Chameleon, we were sold on the spot: thanks to a clever crystal layer, you can actually see the facade change colour as you walk past it, with a different incidence light every time. No matter what the angle, you won't see the same thing twice. They give the building the exact modern look that is needed at this location."



Project: Renovated flats, Haarlem, the Netherlands





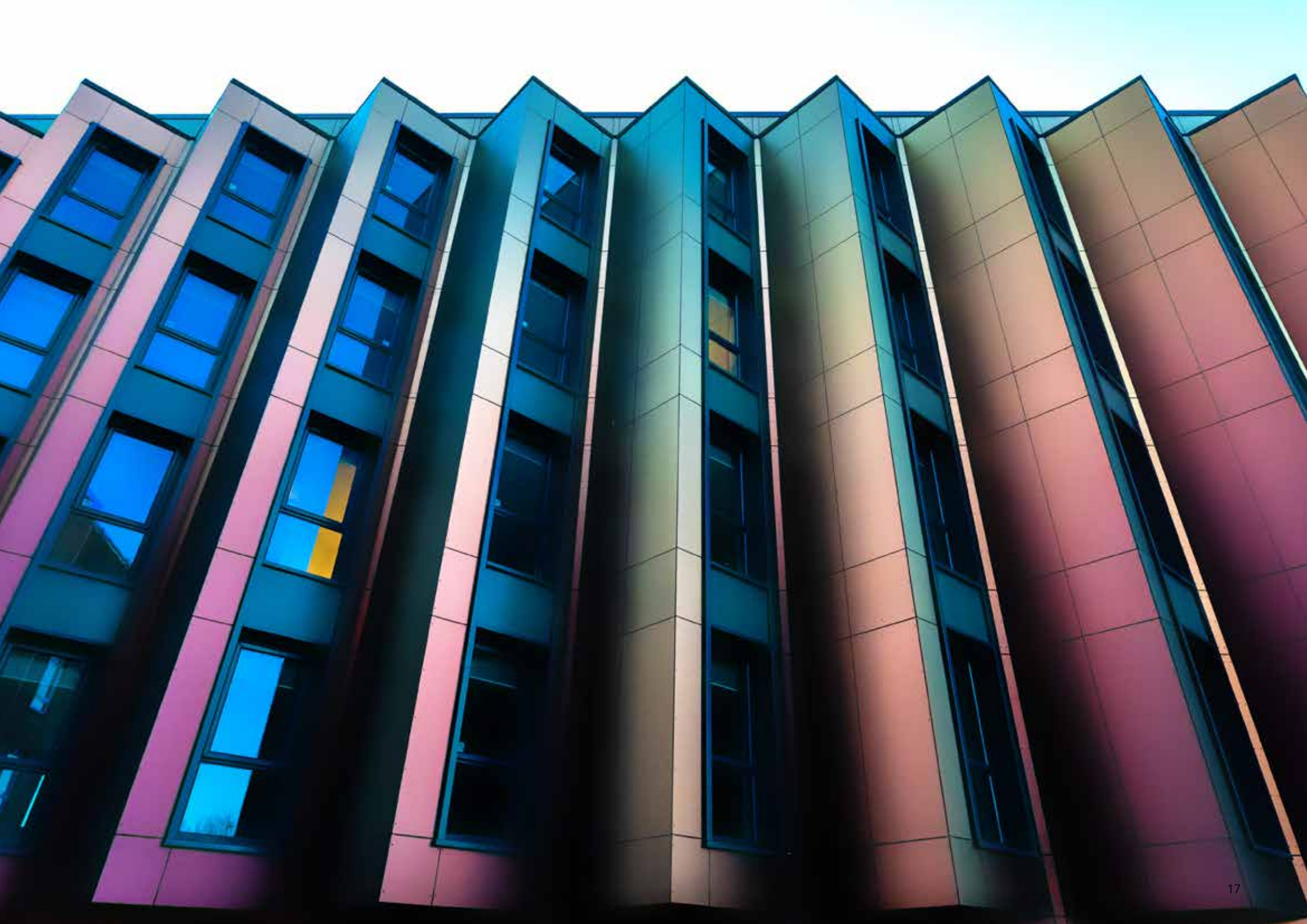
An exciting student residence

The ambition for Coppergate was to create a beautiful, contemporary landmark structure.

This student living complex comprises 24 self-contained studio apartments and 286 en-suite cluster suites spread across a 14-storey tower block and twin six storey wings. The facades feature around 2250m² of matt Rockpanel Chameleon Red-Gold-Purple cladding, celebrating the rich copper mining history in the area.

Project: Coppergate student housing, Swansea, United Kingdom







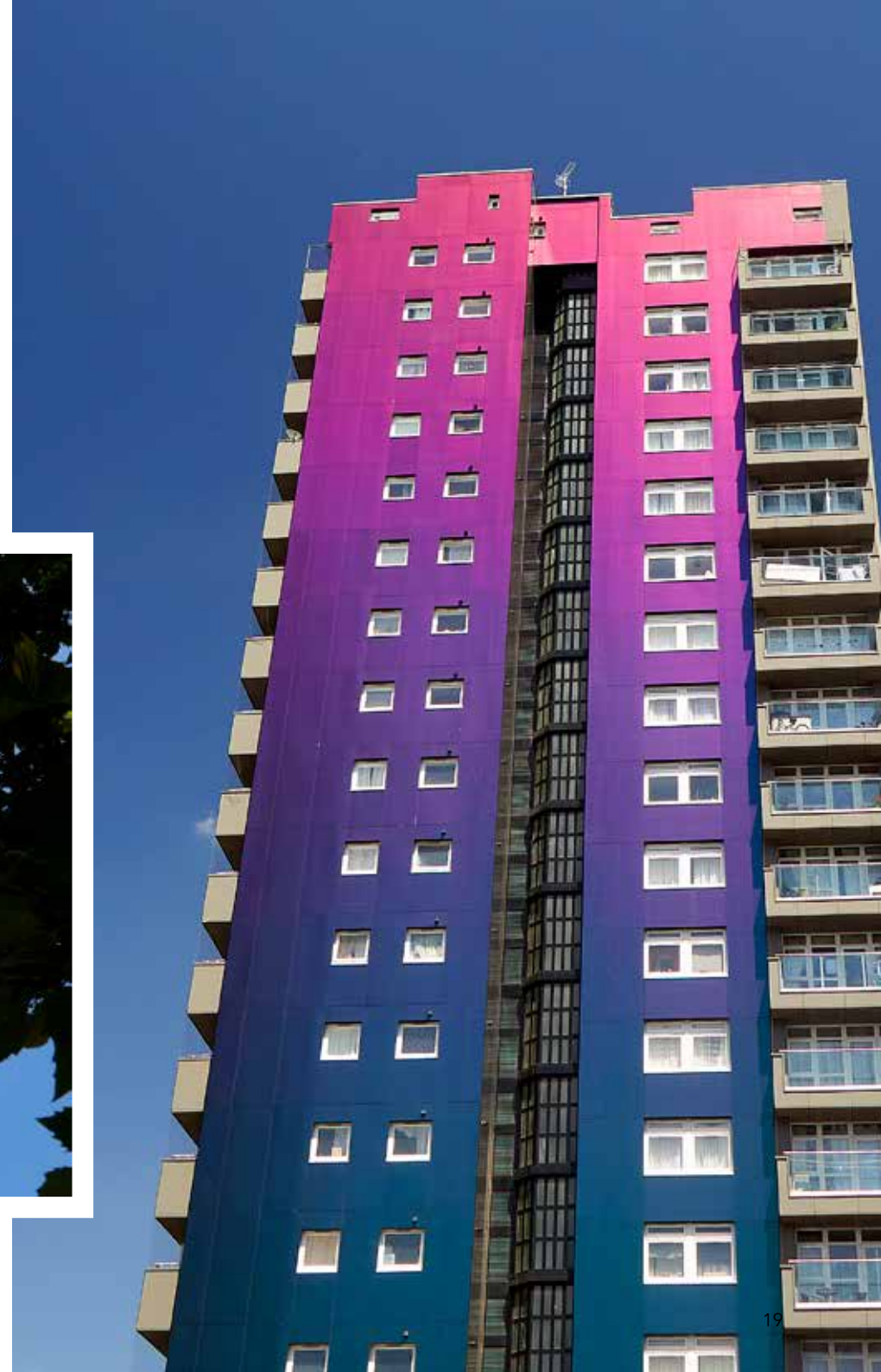
Up to the top

Fire safety was a key element in the renovation of three 20-storey apartment blocks. With Euroclass A2 cladding, the high-rise trio shimmer safely in the South London sun.

The residents were given the final decision on the colours and finishes to be used. They chose high-gloss Rockpanel Chameleon – Purple-Green-Blue for Ambleside, Red-Gold-Purple for Grasmere, and Light Purple-Light Brown for Windemere.



Project: Tustin Estate, London, United Kingdom



The waves of the Paprocańskie Lake

Wodny Park is the most energy-efficient water park in Poland, and maybe even in Europe. The innovative, multi-award-winning building takes colour to new levels.

The architects wanted to create a building that would fit perfectly into the surroundings of Tychy and that was unlike any other parks of this type.



Project: Wodny Park, Tychy, Poland

Inspiration was found close to home.

The architects decided to refer to the natural environment and the dynamic, wavy shapes of the Paprocańskie Lake. With liquid forms and breaking waves in the design it reflects the lake's status as a local and national symbol of pride.





Project: Sherwin Office, Kortenberg, Belgium

A true showpiece

Being a painting and decorating company, known for delivering powerful and striking products, it was clear from the beginning that Sherwin wanted to transform their new office building into a true showpiece. Of course, that needed to include a facade that really stands out from the crowd.

Dimitri De Graeve, the owner of Sherwin, is very happy with the end result: "The facade turned out just beautiful and attracts a lot of attention from people passing by. Looking back, I really wouldn't change a thing. The material is aesthetic, light and very easy to work with. It really belongs at the top of facade materials."



Cutting edge exteriors

Merry Hill, one of the largest shopping centres in the UK, was transformed into an exciting retail environment with innovative, cutting edge exteriors that not only attract consumers during daylight, but are also visually extraordinary after dark.



The centre consists of three sections, all with a very different appearance. One maximises the striking colour changing capabilities of Rockpanel Chameleon to its full potential, using undulated curves in Purple-Green-Blue to create a flowing wave across the facade.

Project: Merry Hill Shopping Centre, Brierly Hill, United Kingdom



An aerial, top-down view of a modern building's roof. The roof is composed of large, rectangular panels in a variety of colors including yellow, orange, red, and purple. A prominent feature is a large, blue, rectangular skylight or window opening in the lower right quadrant. The overall composition is geometric and vibrant.

**Discover all the benefits
of Rockpanel Chameleon**

Rockpanel Chameleon: key product properties

Rockpanel Chameleon	Durable	A2	Premium A2	Unit	Test/classification method
Thickness	8	9	11	mm	EN 325
Weight	8.4	11.25	13.75	kg/m ²	
Fire classification*	B-s2,d0	A2-s1,d0	A2-s1,d0	Euroclass	EN 13501-1
Colour stability (5000 h)	4 or better	4 or better	4 or better	Class on greyscale	ISO 105 A02
Density, nominal	1050	1250	1250	kg/m ³	EN 323
Thermal conductivity	0.37	0.55	0.55	W/m·k	EN 10456
Water vapour permeability S _d (at 23 °C and 85% RF) ProtectPlus	< 3.5	N / A	N / A	m	EN 12572
Coefficient of thermal expansion	10.5	9.7	9.7	x10 ⁻³ mm/m·k	EN 438:2 clause 17
Coefficient of moisture expansion (after 4 days)	0.302	0.206	0.206	mm/m	EN 438:2 clause 17
Bending strength, length and width (f ₀₅)	≥ 27	≥ 25.5	≥ 25.5	N/mm ²	EN 310 / EN 1058
Modus of elasticity m(E)	≥ 4015	≥ 4015	≥ 4015	N/mm ²	EN 310

* The Euroclass-classification of all Rockpanel products is based on testing with non-combustible mineral wool insulation. For the field of application covered by the classification, please see the relevant Declaration of Performance.

For high-rise buildings Rockpanel recommends the application of non-combustible (Euroclass A1 or A2) cladding and insulation.

BUILDING INSPIRATIONS



Part of the ROCKWOOL Group

www.rockpanel.co.uk

Learn more about us, ask for product samples and be inspired by attractive reference projects.



www.instagram.com/rockpanel

Get inspired.



www.facebook.com/rockpanel

Be the first to discover our latest international projects.



Engage and interact.